



6, 2, Imperial Building Duke Of Wellington Avenue , London, SE18 6FR

The Royal Arsenal Riverside offers contemporary riverside living within one of London's most established neighbourhoods. Set alongside a beautifully landscaped four-acre park and moments from the River Thames, the development combines calm green surroundings with exceptional connectivity. Residents enjoy exclusive access to the Waterside Club, featuring a swimming pool, gym, spa, private cinema and 24-hour concierge. With an on-site Elizabeth Line station, Uber Boat pier, cafés, restaurants and cultural venues all on the doorstep, The Royal Arsenal Riverside delivers a rare balance of lifestyle, convenience and design-led living just minutes from central London.

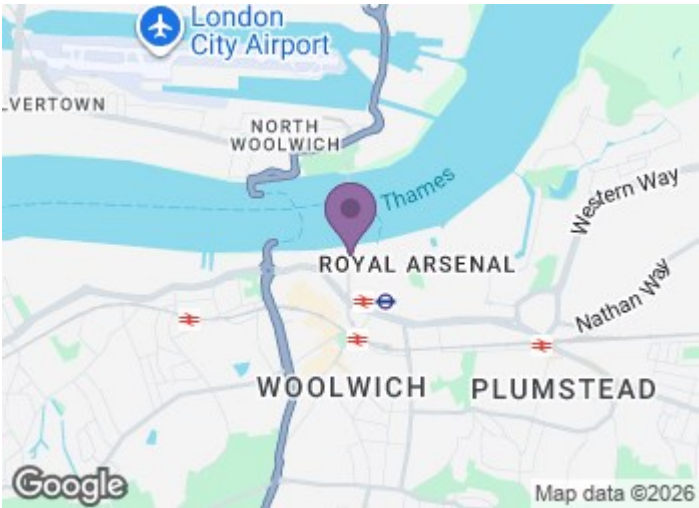
£645,000

6, 2, Imperial Building Duke Of Wellington Avenue

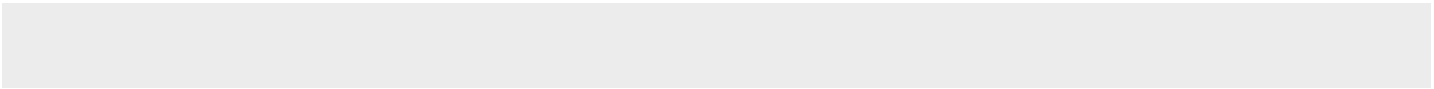
, London, SE18 6FR



- 5 min walk to Woolwich Elizabeth Line
- Paddington in 26 minutes
- 24-hour concierge service
- Canary Wharf in 8 minutes
- London City Airport in 6 minutes by DLR
- Fully equipped gym/spa facilities/ private cinema
- Liverpool Street in 14 minutes
- Residents-only Waterside Club/20m swimming pool

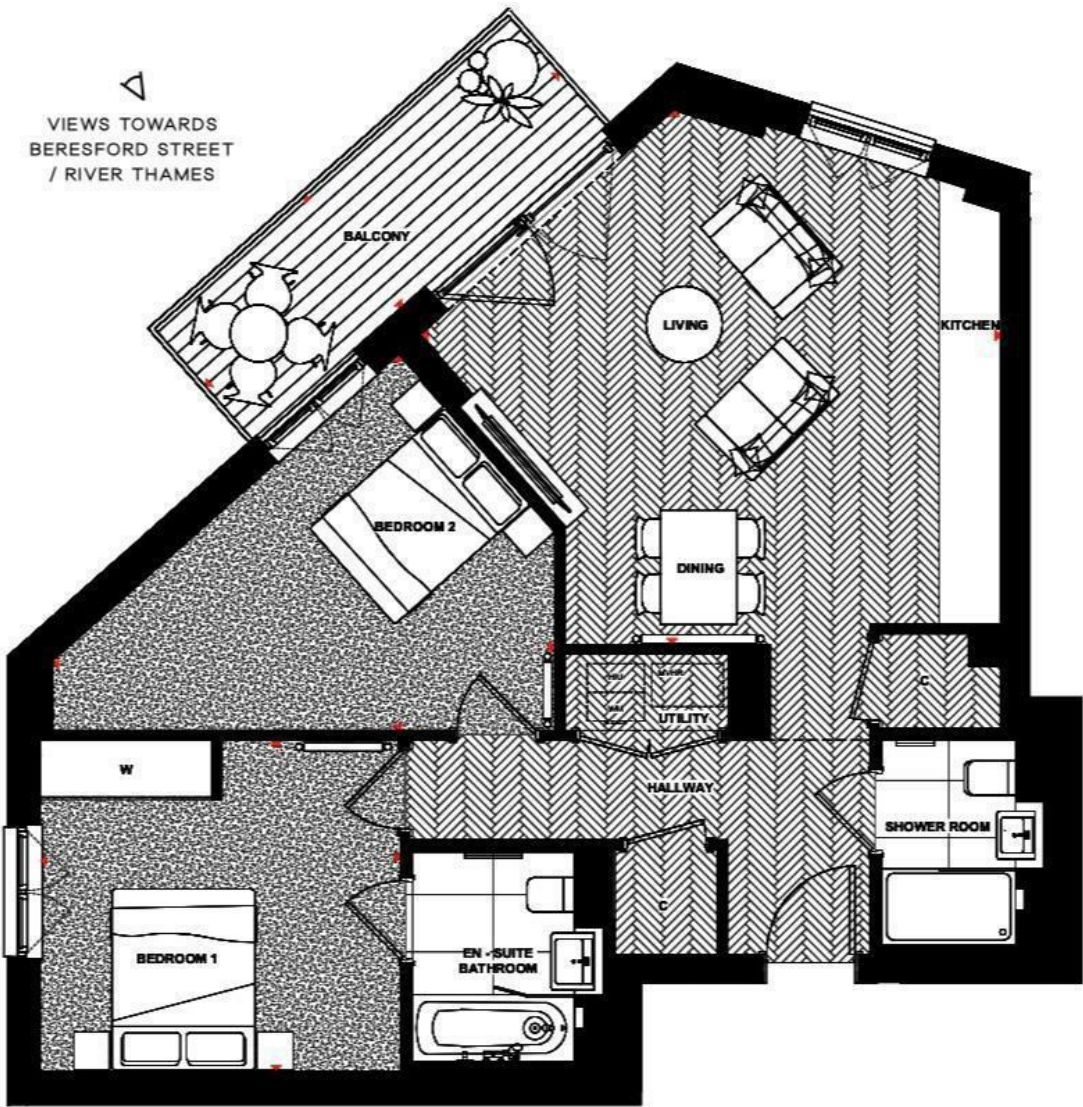


Directions





Floor Plan



These particulars, whilst believed to be accurate are set out as a general outline only for guidance and do not constitute any part of an offer or contract. Intending purchasers should not rely on them as statements of representation of fact, but must satisfy themselves by inspection or otherwise as to their accuracy. No person in this firms employment has the authority to make or give any representation or warranty in respect of the property.

Energy Efficiency Rating		
	Current	Potential
Very energy efficient - lower running costs		
(82 plus) A		
(61-81) B		
(59-80) C		
(55-60) D		
(49-54) E		
(41-48) F		
(1-40) G		
Not energy efficient - higher running costs		
England & Wales		
EU Directive 2002/91/EC		